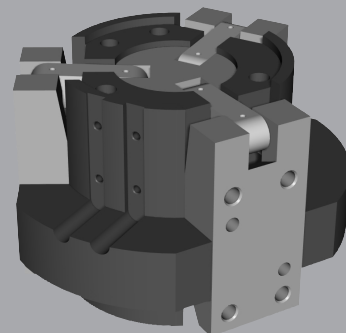


Pneumatic Toggle Grippers OG 3-Finger

OG3 is a three-finger toggle gripper with a high grip force and non-reversible mechanism, suitable for heavy industrial applications.

Advantages

- High energy density.
- Capability to grip parts in opening and closing mode.
- Driving mechanism guided along the entire stroke.
- Large surface for finger mounting to guarantee extremely safe clamping of the workpiece.
- The toggle mechanism provides non-reversible gripping in the opening and closing positions -- even without air pressure
- Air supply via screw connection.



SPECIFICATIONS

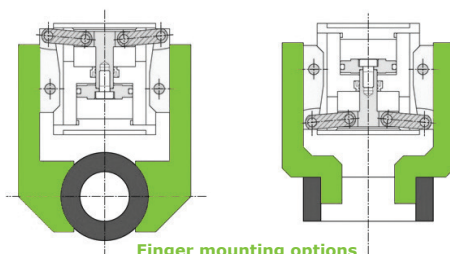
| Model | Stroke Per Jaw | Air Consumption Per Cycle (Dual Stroke) | Closing Moment Per Jaw @ 6 bar | Total Closing Moment Per Jaw @ 6 bar | Recommended Workpiece Weight* | Weight | Repeatability |
|-----------------|----------------|--|--------------------------------|--------------------------------------|-------------------------------|--------------------|-------------------------|
| OG 530-3 | 7.5° | 8.5 cm ³ 0.52 in ³ | 13 Nm 115.1 in lb | 39 Nm 345.2 in lb | 0.62 kg 1.40 lb | 0.50 kg 1.10 lb | ± 0.05 mm ± 0.002 in |
| OG 550-3 | 7.5° | 19 cm ³ 1.16 in ³ | 30 Nm 265.5 in lb | 90 Nm 796.6 in lb | 1.43 kg 3.10 lb | 0.90 kg 1.98 lb | ± 0.05 mm ± 0.002 in |
| OG 570-3 | 8.5° | 76.5 cm ³ 4.67 in ³ | 105 Nm 929.3 in lb | 315 Nm 2788.0 in lb | 5.00 kg 11.00 lb | 3.80 kg 8.36 lb | ± 0.05 mm ± 0.002 in |

* Recommended workpiece weight is calculated for force-fit gripping with a coefficient of static friction of 0.15 and a safety factor of 3 against workpiece slippage.

Operating Pressure **2 - 8 bar (29 - 116 psi)**

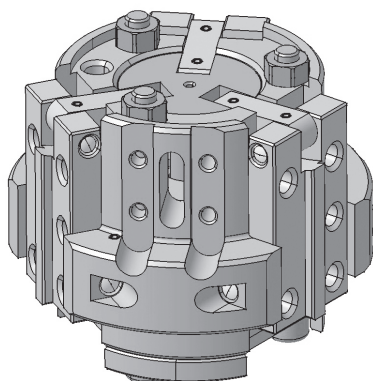
Working Temperature **5 - 60 °C (41 - 140 °F)**

Noise Emission (Sound Pressure) **≤ 70 dB(A) in any direction**

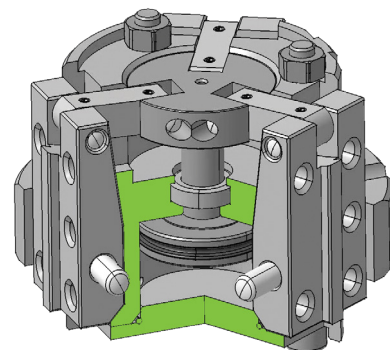


Finger mounting options

SECTIONAL DIAGRAM



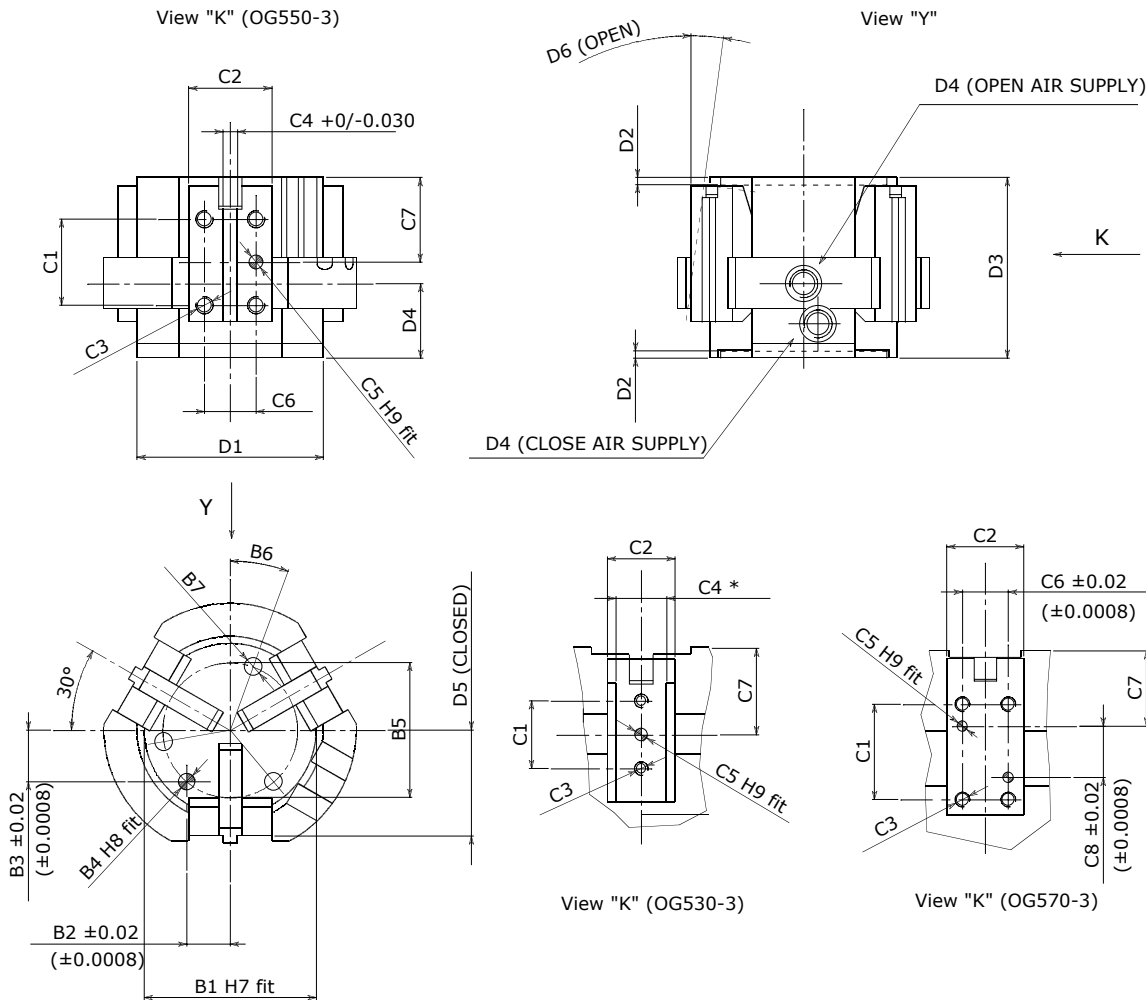
Guidelines for the selection of a gripper model
Selection of the correct gripper model depends on the workpiece's weight, the friction coefficient between the fingers and the workpiece and the required motion of the application. Due to inertial forces associated with motion, we recommend that the holding force of the gripper model should be from 10 to 20 times the workpiece's weight. If the application presents high acceleration/deceleration or impacts during the motion, then a further safety margin should be considered.



PRODUCT INFORMATION

OG 3-Finger

Dowel hole depth: Body $\geq 1 d$ - Jaws $\geq 0.5 d$ (from OG530-3) - $\geq 1 d$ (OG550-3 - OG570-3)
 C4* Up to 6 mm = $0/+0.025$ mm - From 6 mm to 10 mm = $0/+0.030$ mm - Over 10 mm = $0/+0.040$ mm



Options

- Mounting brackets for inductive proximity switches
- Magnetic switches

| | Mounting - Option # 2 | | | | | | | Finger Application | | | | | | | | Informational Dimensions | | | | | |
|-----------------|-----------------------|-----------------|-----------------|-------------|-----------------|-----|---------------|--------------------|--------------|----|--------------|-------------|--------------|-----------------|--------------|--------------------------|---------------|----------------|------|--------------|------|
| | B1 | B2 | B3 | B4 | B5 | B6 | B7 | C1 | C2 | C3 | C4 | C5 | C6 | C7 | C8 | D1 | D2 | D3 | D4 | D5 | D6 |
| OG 530-3 | 50.00 (1.97) | 14.85 (0.58) | 14.85 (0.58) | 5 (0.20) | 27.13 1.07 | 15° | 5.5 (0.22) | 20 (0.79) | 20 (0.79) | M4 | 15 (0.59) | 4 (0.16) | | 25.55 (1.01) | | 60 (2.36) | 2 (0.08) | 53.4 (2.10) | M5 | 27 (1.06) | 7.5° |
| OG 550-3 | 58.00 (2.28) | 15.1 (0.59) | 18 (0.71) | 6 (0.24) | 30.95 1.22 | 20° | 6.5 (0.26) | 30 (1.18) | 29 (1.14) | M6 | 5 (0.20) | 5 (0.20) | 18 (0.71) | 29.5 (1.16) | | 65 (2.56) | 2.5 (0.10) | 63 (2.48) | G1/8 | 37 (1.46) | 7.5° |
| OG 570-3 | 85.00 (3.35) | 22.5 (0.89) | 26.81 (1.06) | 8 (0.31) | 46.11 (1.82) | 20° | 8.5 (0.33) | 52 (2.05) | 42 (1.65) | M8 | | 6 (0.24) | 25 (0.98) | 41 (1.61) | 28 (1.10) | 125 (4.92) | 3.5 (0.14) | 97 (3.82) | G1/8 | 63 (2.48) | 8.5° |

* Dimensions are in millimeters (inches).

** All dimensions are descriptive and subject to variation for technical upgrading. We reserve the right to make variations without prior notification



Applied Robotics
 648 Saratoga Road
 Glenville, NY 12302 USA
 Tel. +1 518 384 1000 Fax +1.5183841200
 info@appliedrobotics.com
 www.appliedrobotics.com



EFFECTO GROUP S.p.A.
 Via Roma, 141/143
 28017 San Maurizio d'Opaglio (NO) - Italy
 Tel. +39 0322 96142 Fax +39 0322 967453
 info@effectogroup.com
 www.effecto.com

